



# Pregnancy & Fertility



## hCG Pregnancy Test—Strip/Cassette/Midstream

The One Step Pregnancy Test is a rapid chromatographic immunoassay for the qualitative detection of human chorionic gonadotropin in urine or serum to aid in the early detection of pregnancy.

Early result midstream test as early as 5 days before expected period (6 days before your missed period).

Fiber tip pregnancy test midstream available.

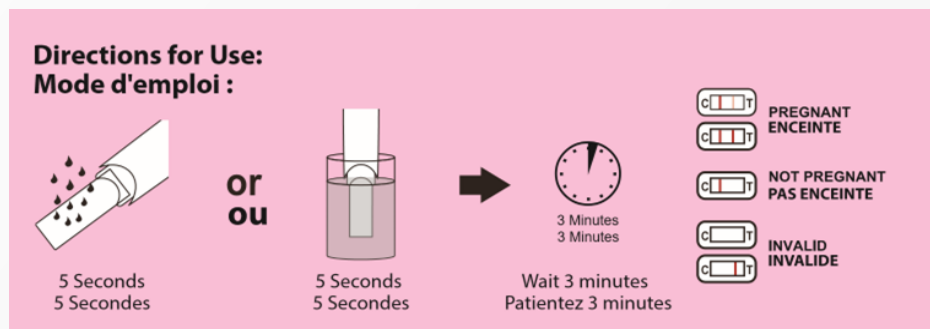
### FEATURES

- Accuracy > 99%
- Simple sample collection and test procedure
- Easy interpretation



### SPECIFICATIONS

- Shelf life: 36 months (applies to hCG, LH strips, and midstream)
- Storage: 2-30°C
- Time to results: 3 minutes  
(As soon as 1 minute for positive results)





# Pregnancy & Fertility



## hCG Pregnancy Test—Strip/Cassette/Midstream

Product Description	Specimen	Catalog No.	Format	Cut-off Value (mIU/mL)	Kit Size
One Step Pregnancy Test Strip	Urine	GAHCG-101a-OTC	Strip	25 mIU/mL	1/5/10/25 Tests/Kit
One Step Pregnancy Test Strip	Urine	GAHCG-101b-OTC	Strip	10 mIU/mL	1/5/10/25 Tests/Kit
One Step Pregnancy Test Cassette	Urine	GAHCG-102a	Cassette	25 mIU/mL	1/5/10/25 Tests/Kit
One Step Pregnancy Test Cassette	Urine	GAHCG-102b	Cassette	10 mIU/mL	1/5/10/25 Tests/Kit
One Step Pregnancy Test Midstream	Urine	GAHCG-103a	Midstream	25 mIU/mL	1/2 Tests/Kit
One Step Pregnancy Test Midstream	Urine	GAHCG-103b	Midstream	10 mIU/mL	1/2 Tests/Kit
One Step Pregnancy Test Cassette	Urine/Serum	GAHCG-202a	Cassette	25 mIU/mL	25 Tests/Kit
hCG Early Detection Pregnancy Test (Non-Fiber Tip)	Urine	GAHCG-103m-H1/2	Midstream	10 mIU/mL	1/2 Test/Kit
Early Result Pregnancy Test (Fiber Tip)	Urine	GAHCG-103m-OTC	Midstream	10 mIU/mL	1/2/5 Test/Kit



# Pregnancy & Fertility



## Early Result Digital Pregnancy Test

The Digital Pregnancy Test is a rapid, qualitative detection of human chorionic gonadotropin (HCG) in urine, which is suitable for the early diagnosis of pregnancy. The device is a self-test IVD medical equipment which is intended by the manufacturer for use by lay person in a home environment.

Tests as early as 5 days before your expected period (6 days before your missed period).

Health Canada Licensed for self-testing.

### FEATURES

- Accuracy >99%
- Screen displays results digitally ("Pregnant" or "Not Pregnant")
- Screen automatically displays countdown time during test procedure



### SPECIFICATIONS

- Shelf life: 24 months
- Storage: 2-30°C
- Time to results: 3 minutes

Product Description	Specimen	Catalog No.	Format	Cut-off Value (mIU/mL)	Kit Size
Digital Early Result Pregnancy Test (Fiber Tip)	Urine	GAHCG-D103m-OTC	Midstream	10 mIU/mL	1/2/5 Test/Kit



# Pregnancy & Fertility



## LH Ovulation Rapid Test (Strip/Midstream)

The One Step Ovulation Test is a rapid chromatographic immunoassay for the qualitative detection of luteinizing hormone (LH) in urine to aid in the detection of ovulation.

Health Canada Licensed for self-testing.



Product Description	Specimen	Catalog No.	Format	Cut-off Value (mIU/mL)	Kit Size
LH Ovulation Rapid Test Strip	Urine	GALH-101a-OTC	Strip	25 mIU/mL	1/5/10 Tests/Kit
LH Ovulation Rapid Test Strip	Urine	GALH-101b-OTC	Strip	40 mIU/mL	1/5/10 Tests/Kit
LH Ovulation Rapid Test Strip	Urine	GALH-101d-OTC	Strip	30 mIU/mL	1/5/10 Tests/Kit
LH Ovulation Test Midstream	Urine	GALH-103a-OTC	Midstream	25 mIU/mL	1/5/10 Tests/Kit
LH Ovulation Test Midstream	Urine	GALH-103b-OTC	Midstream	40 mIU/mL	1/5/10 Tests/Kit
LH Ovulation Test Midstream	Urine	GALH-103d-OTC	Midstream	30 mIU/mL	1/5/10 Tests/Kit

## FSH Menopause Test (Strip/Midstream)

The FSH Menopause Test is a rapid lateral flow chromatographic immunoassay for the qualitative detection of Follicle-Stimulating Hormone (FSH) level in urine to evaluate the onset of menopause in women.

Health Canada Licensed for self-testing.



Product Description	Specimen	Catalog No.	Format	Cut-off Value (mIU/mL)	Kit Size
FSH Menopause Test Strip	Urine	GAFSH-101a-OTC	Strip	25 mIU/mL	1/5/10 Tests/Kit
FSH Menopause Test Midstream	Urine	GAFSH-103a-OTC	Midstream	25 mIU/mL	1/5/10 Tests/Kit



# Pregnancy & Fertility



## Male Fertility Sperm Test

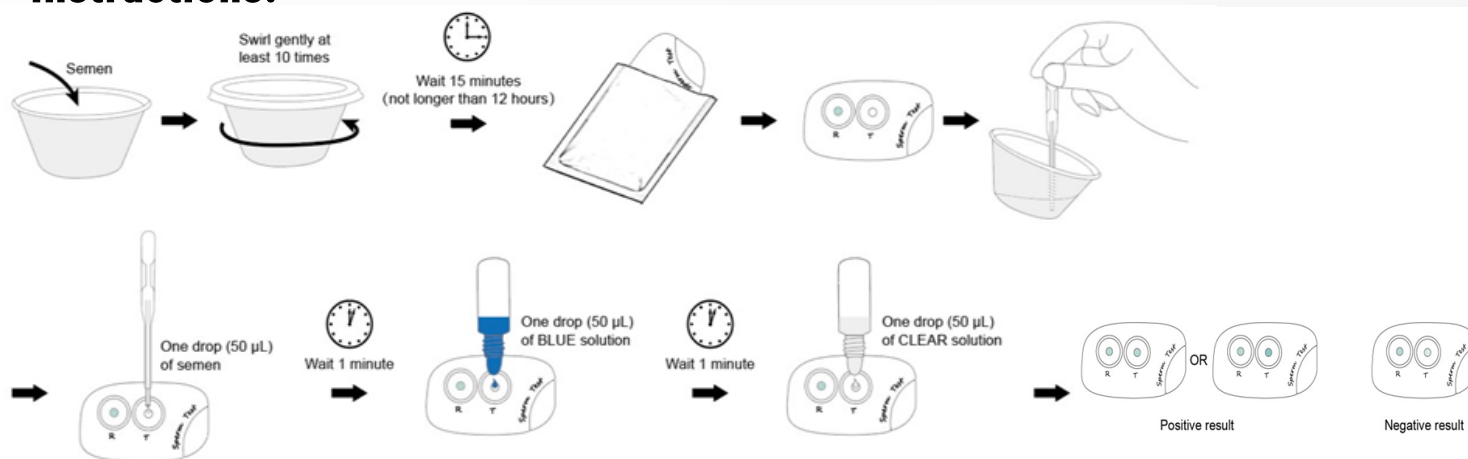
The Male Fertility Sperm Test is a rapid test of semen for sperm concentration. It will measure sperm either as above or below the cut-off of 15 million sperm cells per milliliter (mL). Two test results of less than 15 million cells/mL are an indicator of male infertility.

Health Canada licensed OTC product for self-testing



Product Description	Specimen	Catalog No.	Format	Cut-off Value (mIU/mL)	Kit Size
Male Fertility Sperm Test	Sperm	GASPE-902a-OTC	Cassette	15 M/mL	2 Tests/Kit

### Instructions:



Result	Visual Indicator	Interpretation
Positive	Blue color in Test well (T well) is <b>equally dark or darker</b> than the reference color (R well)	Sperm concentration is $\geq 15$ million/mL
Negative	Blue color in Test well (T well) is <b>lighter</b> than the reference color (R well)	Sperm concentration is $\leq 15$ million/mL. Please consult doctor