



# ORAL FLUID DRUG SCREEN



## Oral Fluid Drug Test: Device E, F, L

Oral fluid drug screening solutions that provide a comprehensive procedure and reliable results.

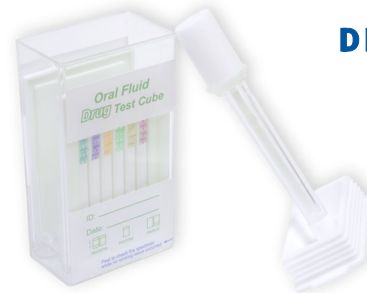
Testing oral fluid for drugs is a non-invasive method to allow for direct observation of specimen collection which reduces risk of specimen tampering.

### FEATURES

- Observation of specimen collection directly on-site
- Easily administered test procedure
- Customizable multi-drug test panels available
- Health Canada Class II license includes 64 drugs with 138 cut-offs, including THC parent test at cut-off 4 and 10ng/ml
- Highly accurate, sensitive and specific
- Different device models available (E, F, L)
- Saturation indicator in swab ensures sample specimen volume (applies to devices E and L only)
- Sample port for access to specimen for confirmation testing (Device E)
- Lid closure secured by clip to ensure sample integrity (Device E)
- French IFU available upon request



DEVICE E



DEVICE F



DEVICE L

### SPECIFICATIONS

- One drug per strip (3 tests/strip available for Device L)
- Qualitative results within 10 minutes
- Internal, procedural control included
- 24-Month shelf life
- Individually packaged devices: 25 tests/kit, 4 kits/shipping carton
- 24-Month shelf life
- Custom configurations, private-labels, and other device models available

Healgen Scientific, LLC 3818 Fuqua St. Houston, TX 77047, USA [www.healgen.com](http://www.healgen.com)

Healstone Biotech Inc., Unit #650-655 West Kent Avenue North, Vancouver, B.C., Canada, V6P 6T7

1-800-919-3622/1-604-800-2434/ [info.healstone@healgen.com](mailto:info.healstone@healgen.com) [www.healstone.com](http://www.healstone.com)



# TEST MENU

## Oral Fluid Drug Test: Device E, F, L



Test	Calibrator	Cut-off (ng/mL)
AB-PINACA (K3)	AB-PINACA	10
Amphetamine (AMP)	d-Amphetamine	25/40/50
Alprazolam (ALP)	Alprazolam	50/100
Barbiturate (BAR)	Secobarbital	20/30/50/300
Benzodiazepine (BZO)	Oxazepam	10/20/50
Buprenorphine (BUP)	Buprenorphine	5/10/20
Carfentanyl (CFYL)	Carfentanyl	50/100
Carisoprodol (SOMA)	Carisoprodol	300
Cathine (CAT)	Cathine	200
Cocaine (COC)	Benzoyllecgonine	10/15/20/30/50
Codeine (COD)	Codeine	10/30
Cotinine (COT)	Cotinine	10/30/50
Dextromethorphan (DXM)	Dextromethorphan	100
Dimethyltryptamine (DMT)	Dimethyltryptamine	100
Diphenoxylate (DIP)	Diphenoxylate	150
Ecstasy (MDMA)	3,4-Methylenedioxyamphetamine	30/50/60/80
Etomidate (ETO)	Etomidate	20/50
Fentanyl (NFYL)	Norfentanyl	1/2/5/10
Fentanyl (FEN)	Fentanyl	1/5/10
Fluoxetine (FLX)	Fluoxetine	60
Heroin (6-MAM)	6-Monoacetylmorphine	4/5/10/15/25
Hexahydrocannabinol (HHC)	Hexahydrocannabinol	300
Hydromorphone (HMO)	Hydromorphone	30/100
Ketamine (KET)	Ketamine	50/100
Kratom (KRA)	Mitragynine	100

Test	Calibrator	Cut-off (ng/mL)
Lysergic acid diethylamide (LSD)	d-Lysergic acid diethylamide	5/10/25
Marijuana (THC(M))	11-nor- $\Delta^9$ -THC-9 COOH	3/3.5/4/5/8/10/12
Marijuana (THC)	$\Delta^9$ -THC	4/10/15/20/25/40 / 50
Meperidine (MRD)	Meperidine	15/30
Mephedrone (MEP)	Mephedrone	50
Methadone Metabolite (EDDP)	2-Ethyliden-1,5-Dimethyl-3,3-Diphenylpyrrolidine	20
Methadone (MTD)	Methadone	30/50/75
Methamphetamine (MET)	D-Methamphetamine	25/50
Methaqualone (MQL)	Methaqualone	100/150
Methylenedioxypropylvalerone (MDPV)	Methylenedioxypropylvalerone	50/100
Methylphenidate (MPD)	Methylphenidate	50
Metomidate (MTO)	Metomidate	100
Metonitazene (MTN)	Metonitazene	100
Modafinil (MOD)	Modafinil	100
Morphine (MOP)	Morphine	15/30
Mushroom (PY)	Mushroom	100
Nitazene (NTZ)	Nitazene	100
Olanzapine (OZP)	Olanzapine	200
Opiates (OPI)	Morphine	10/30/40/50
Oxycodone (OXY)	Oxycodone	10/20/30/40/50
Phencyclidine (PCP)	Phencyclidine	10
Phenytoin (PHT)	Phenytoin	150
Propoxyphene (PPX)	Propoxyphene	20/50
Quetiapine (QTP)	Quetiapine	200
Risperidone (RPD)	Risperidone	60

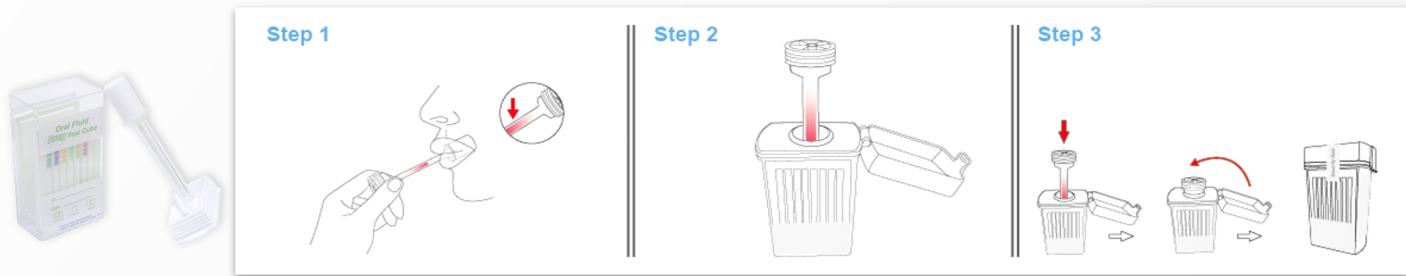


# TEST MENU

## Oral Fluid Drug Test: Device E, F, L



Test	Calibrator	Cut-off (ng/mL)
Synthetic Cannabinoid (K2)	JWH-073/JWH-018	5/10/25
Tiletamine (TIL)	2-(Ethylamino)-2-(2- thienyl) cyclohexanone	300
Tilidine (TLD)	Tilidine	50
Tramadol (TRA)	Tramadol	25/30/35/50/100
Trihexyphenidyl (PAR)	Trihexyphenidyl	300
Tricyclic Antidepressants (TCA)	Nortriptyline	100
Tropicamide (TRO)	Tropicamide	100
UR -144 (K4)	Synthetic Cannabinoid	20/50/100
Xylazine (XYL)	Xylazine	10/20
Zolpidem (ZOL)	Zolpidem	25/50
Zopiclone (ZOP)	Zopiclone	25/50
α-Pyrrolidinopentiophenone (α- PVP)	α-PVP	20/50
2-Fluorodeschloroketamine (FKET)	2-Fluorodeschloroketamine	100
Alcohol (ALC)	Alcohol	> 0.02 % B.A.C



See Instructions for Use for more details

